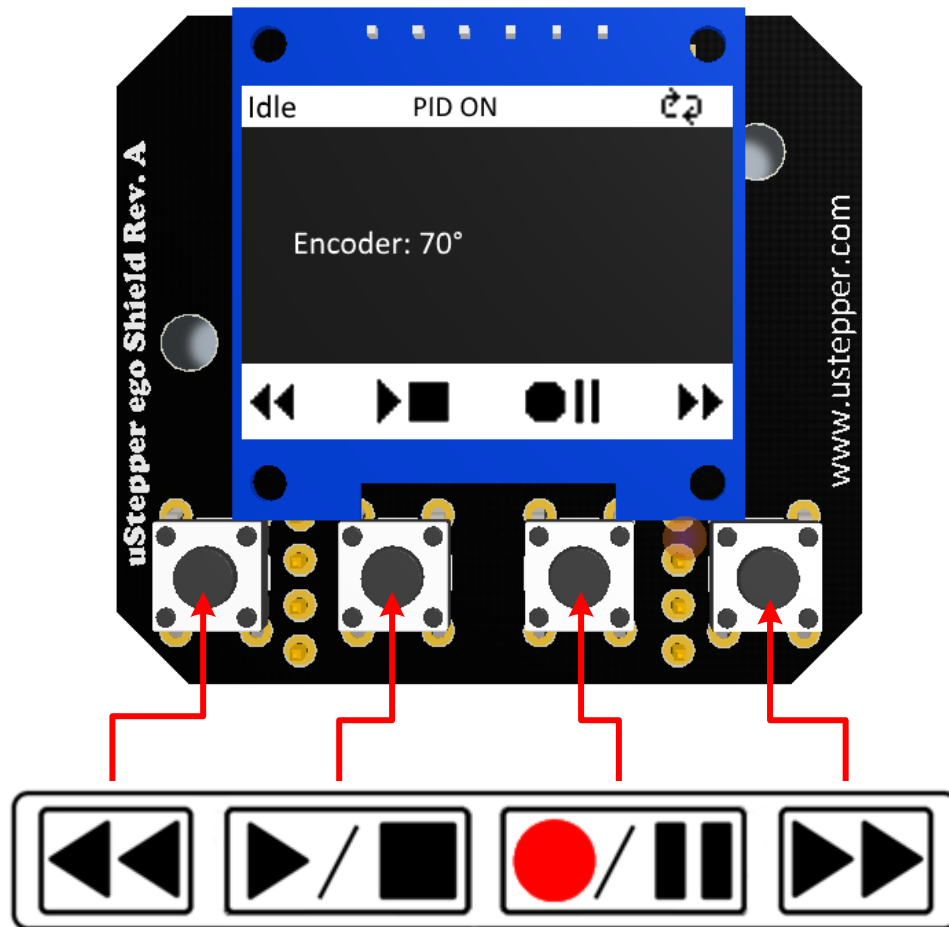


egoShield with 4 push-buttons and OLED display



The control in the library has the following functionality:

- Idle state
 - Press **FWD** or **REV** to manually move 10 deg in either direction
 - Press and hold **FWD** or **REV** to move continuous until releasing
 - Press and hold **RECORD** to enter recording state
 - Press **PLAY** to enter Play state, and play recorded sequence
 - Press and hold **STOP** to invert PID mode (either PID ON or PID OFF)
- Record state
 - Press **RECORD** to record position
 - Press and hold **STOP** to go into Idle state again
 - If PID ON:
 - Press **FWD** or **REV** to manually move 10 deg in either direction
 - Press and hold **FWD** or **REV** to move continuous until releasing
 - If PID OFF:
 - Also possible to move by hand
- Play state
 - Press **PAUSE** to enter Pause state at next position
 - Press and hold **STOP** to stop play and go into Idle state
 - Press and hold **FWD** to play sequence in loop
 - Press and hold **REV** to stop looping
- Pause state
 - Press **PLAY** to continue playing by entering Play state
 - Press and hold **STOP** to go into Idle state