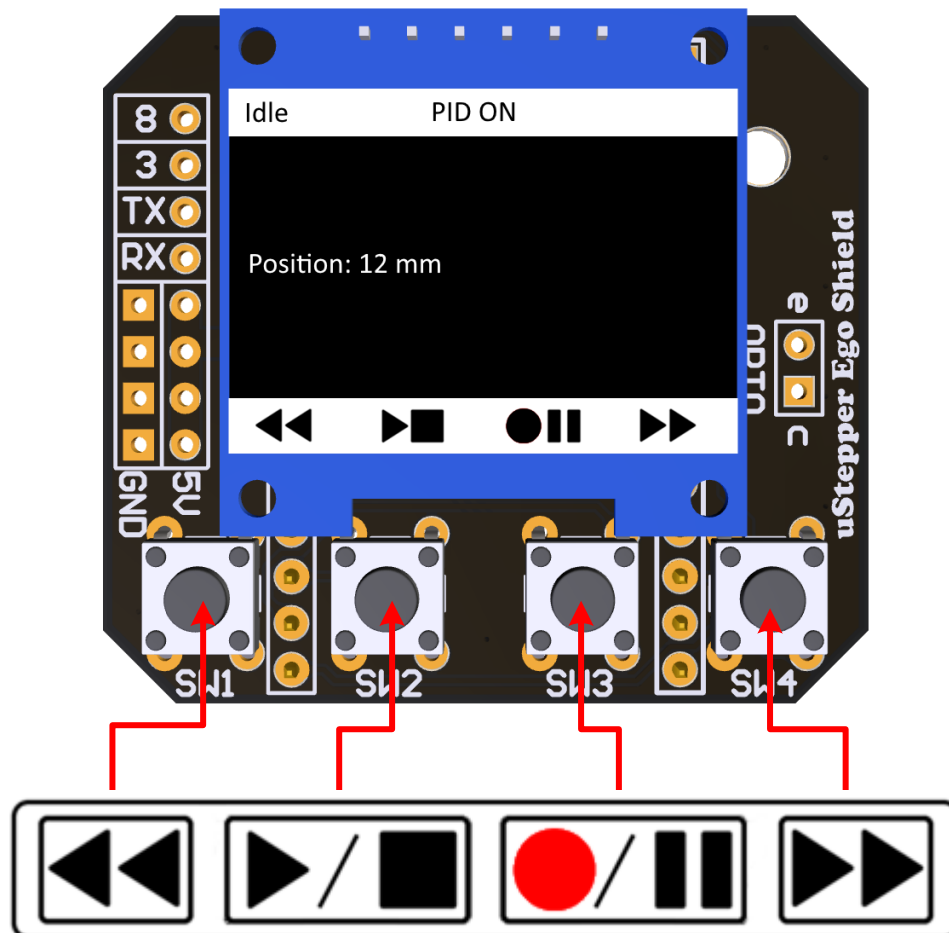


## egoShield with 4 push-buttons and OLED display



### The TimeLapse library has the following functionality:

- Idle state
  - Press **FWD** or **REV** to manually move 1mm in either direction
  - Press and hold **FWD** or **REV** to move continuous until releasing
  - Press **RECORD** to enter TimeLapse state
  - Press and hold **STOP** to invert PID mode (either PID ON or PID OFF)
- TimeLapse state
  - Press **FWD** or **REV** to Change the value in the menu
  - Press **RECORD** to Move to the next menu item
  - After reaching the final item, press **PLAY** to start TimeLapse
  - Press **STOP** to exit TimeLapse state, and return to Idle state