

VCC

FOUT

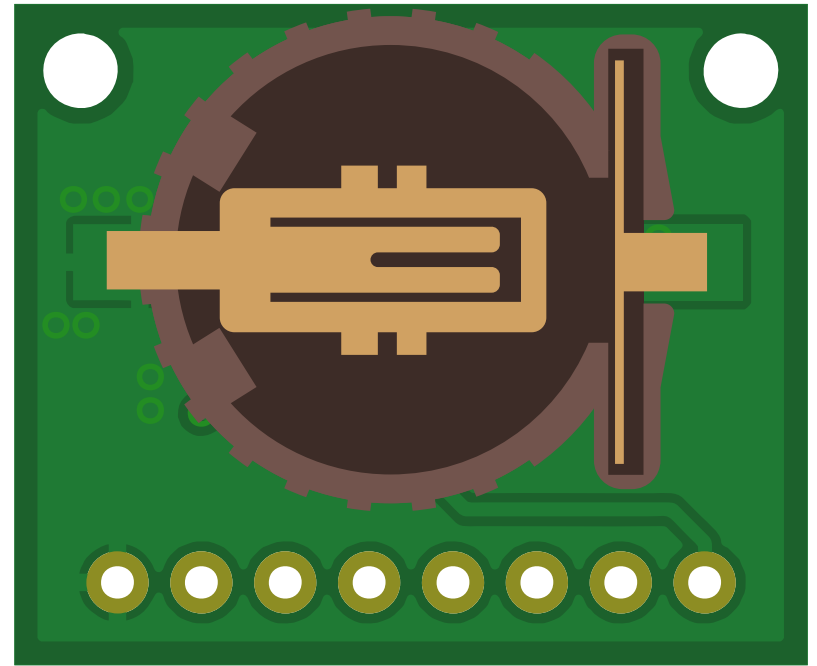
FOE

SCL

SDA

INT

GND



GND

INT

SDA

SCL

FOE

FOUT

VCC

VCC

GND

1.8 - 5.5V

SCL

SDA

I<sup>2</sup>C BUS

INT

INTERRUPT OUTPUT

FOUT

32.768KHZ OUTPUT

FOE

IF "1" FOUT "ON"

IF "0" FOUT "OFF"