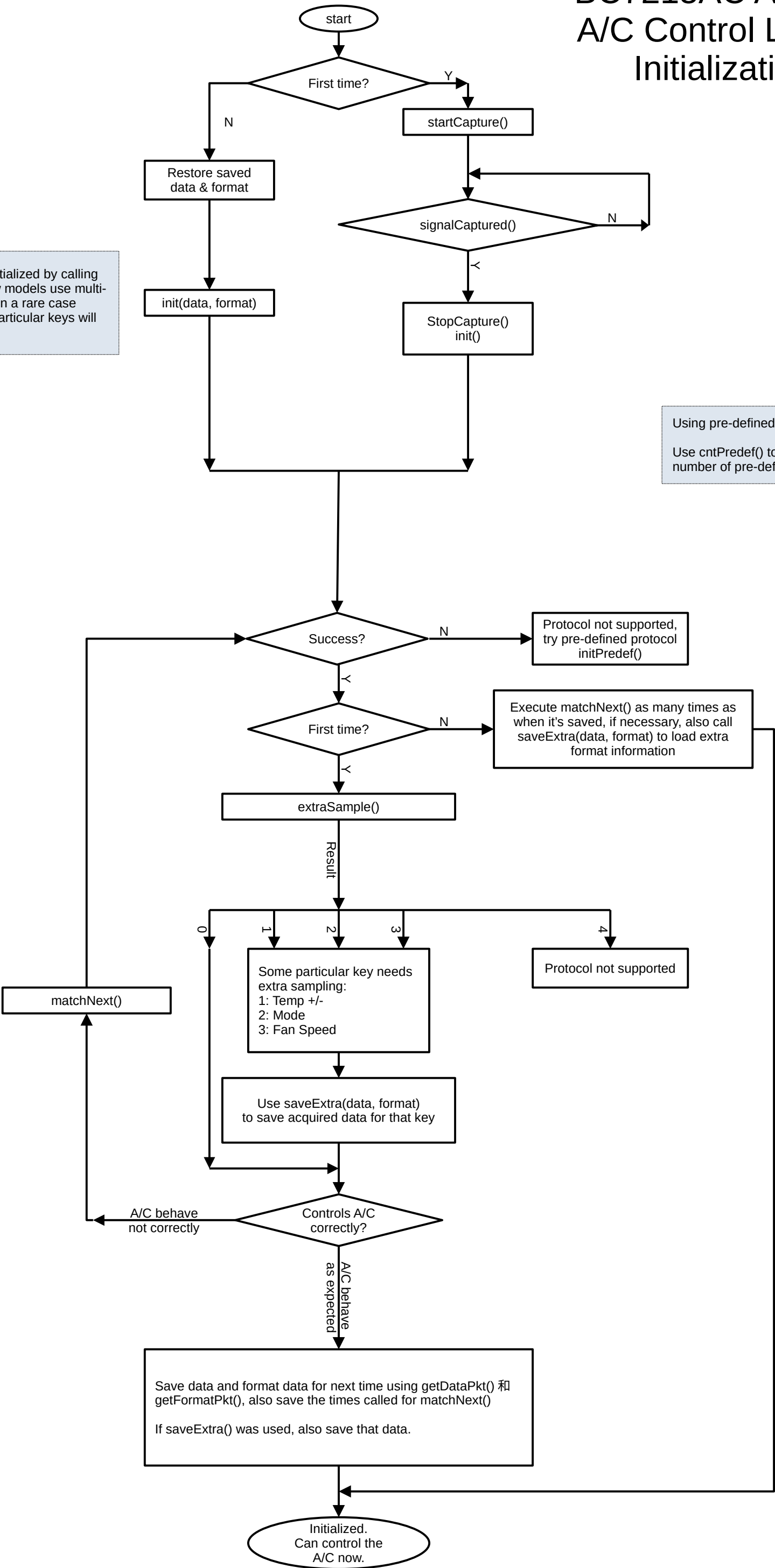


BC7215AC Arduino A/C Control Library Initialization

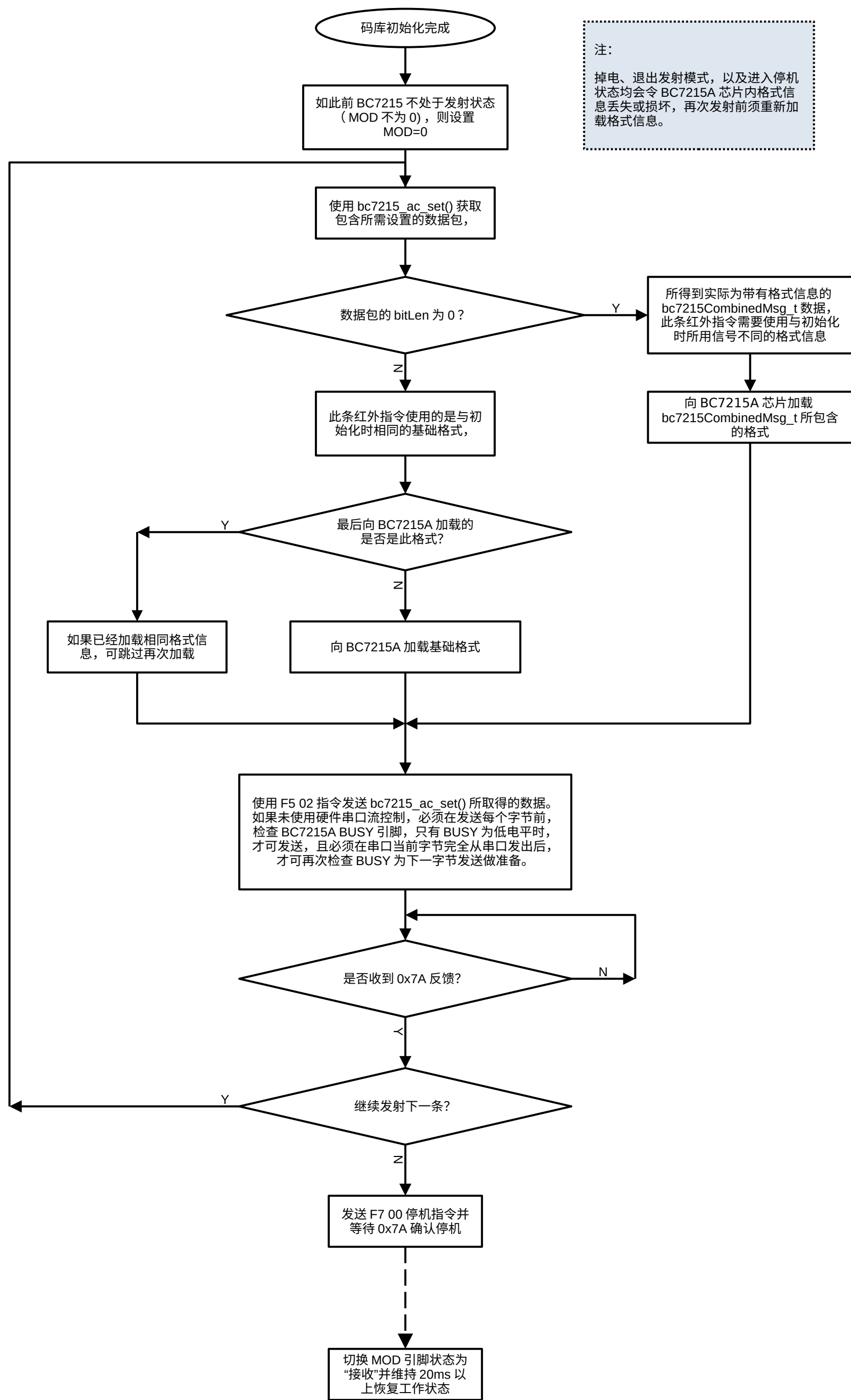


Note:
Most A/Cs will be initialized by calling the `init()` once. A few models use multi-segment protocols, in a rare case extra sampling for particular keys will be required.

Using pre-defined protocols:

Use `cntPredef()` to get the total number of pre-defined protocols.

空调基本控制流程



任意其它功能控制流程

