



OSP32.PrjPcb

MCU	OE	G	G	SAID
C	D	OUT	C	D

I2C 3V - G I D C 5V

RST

INT

5V

BIDIR

OK

OUT

L1.0

L1.1

4V7

LOOP

ERR

IN



OSP32 v9

SAID OUT

SAID IN

OUT

IN

GND

P

N

5V

5V

N

P

GND

G 5V

A

X

Y

L2.2

L2.1

L2.0

MCU	IN	SAID
C	D	C

am OSRAM 06/24 MPEN & ASA2

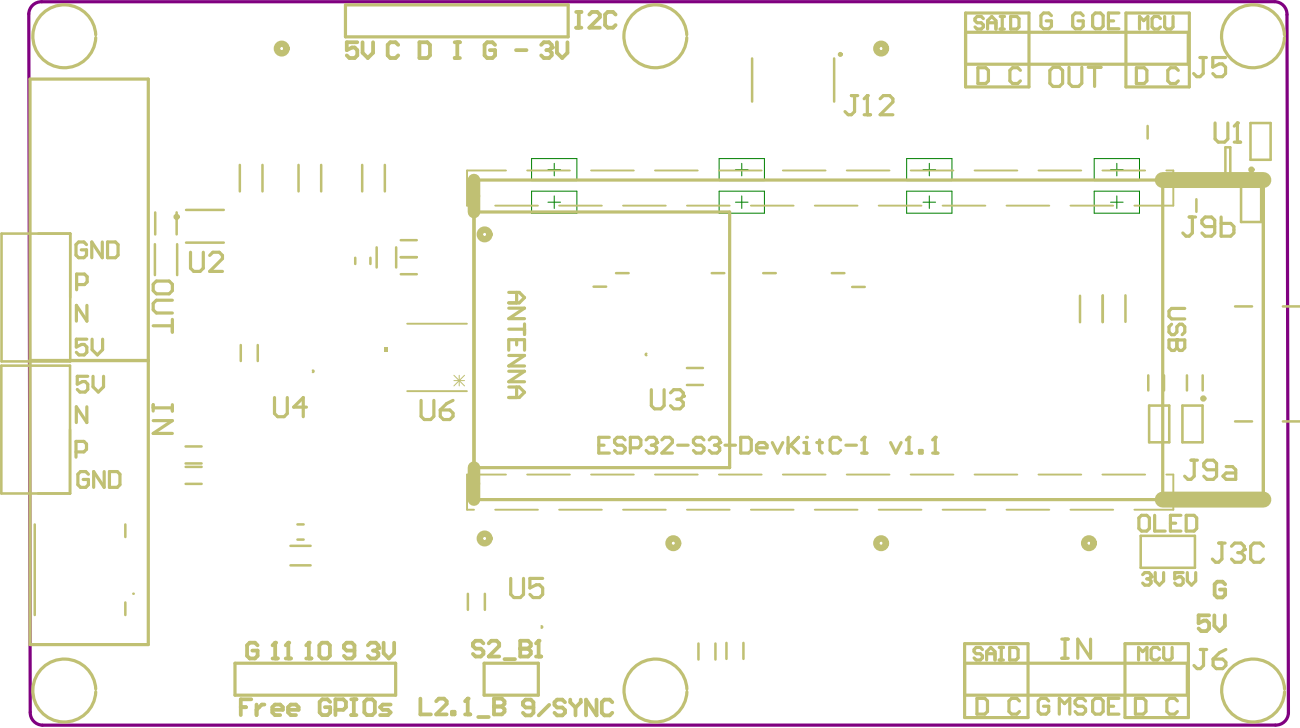
S2_B1

J8

9/SYNC L2.1_B

3V 9 10 11 G

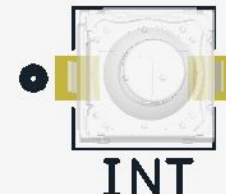
Free GPIOs



MCU	OE	G	G	SAID
○	○	○	○	○
C	D	OUT	C	D



I2C	○	○	○	○	○	○	□
3V	-	G	I	D	C	5V	



5V
4V7

BIDIR
LOOP

OK
ERR

OUT
IN

L1.0

L1.1

SAID OUT



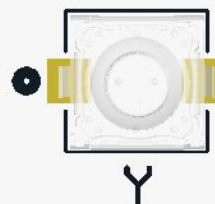
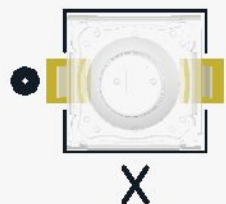
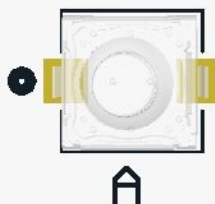
OSP32 v9

SAID IN

OUT
IN

GND	○
P	○
N	○
5V	○
5V	○
N	○
P	○
GND	○

G
5V



L2.2

L2.1

L2.0

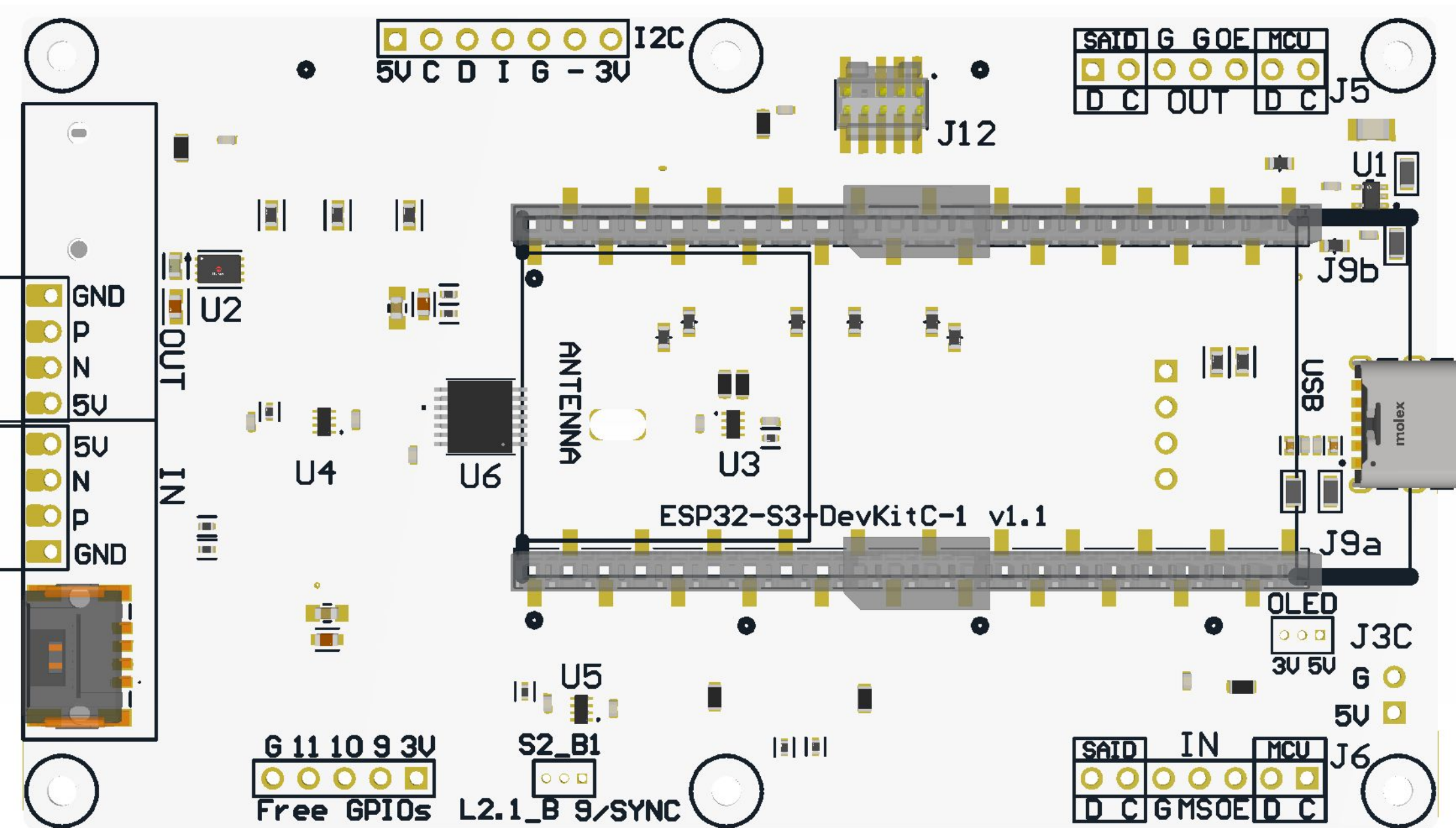
MCU	IN	SAID
○	○	○
C	D	C

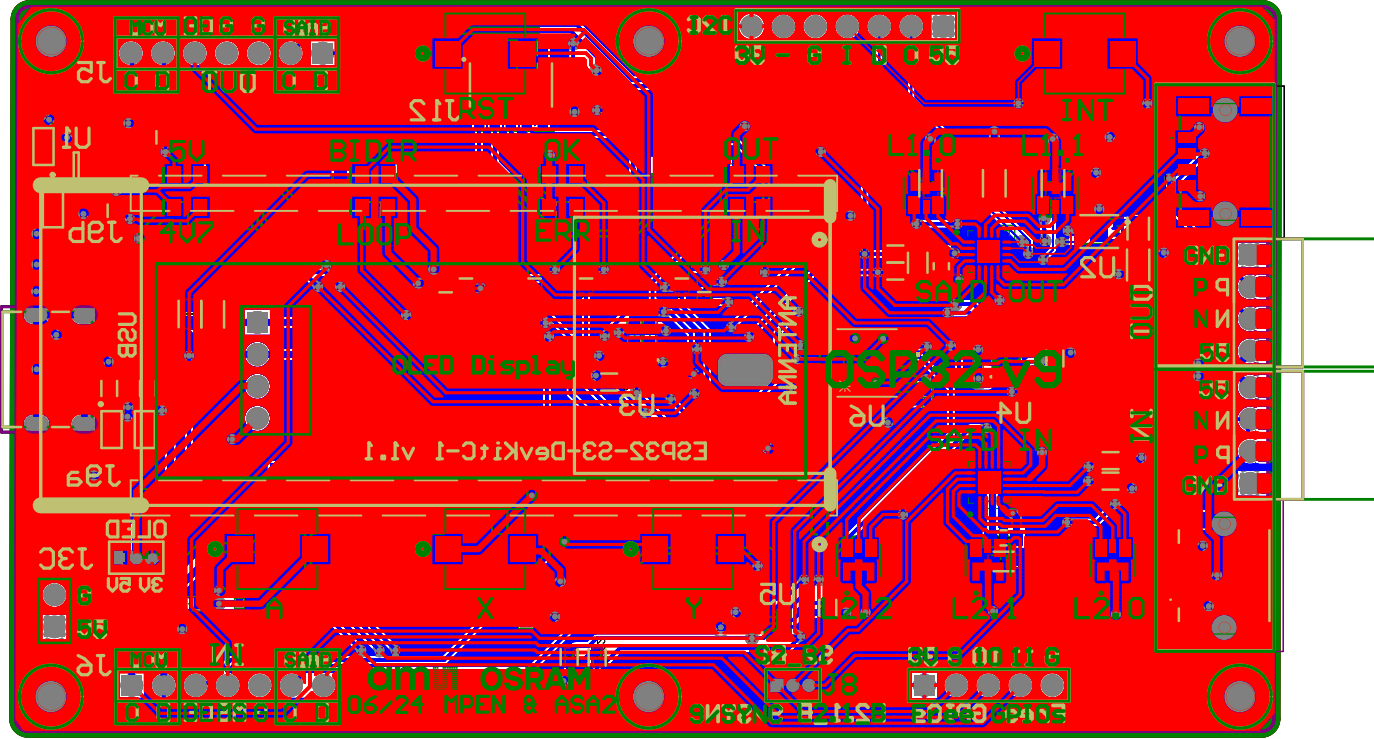
am OSRAM
06/24 MPEN & ASA2



S2_B1
J8
9/SYNC L2.1_B

3V 9 10 11 G
Free GPIOs





MCU OE G G SAID
C D OUT C D

12C
3V - 6 I D C 5V

RST

INT

5V
4V7

BIDIR
LOOP

OK
ERR

OUT
IN

L1.0 L1.1
SAID OUT

OLED Display

OSP32 v9

SAID IN

GND
P N
5V
5V
N P
GND

G
5V

A

X

Y

